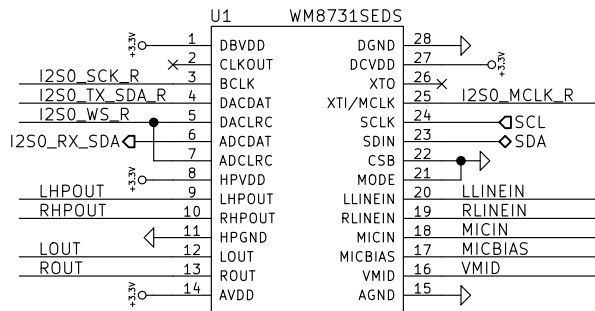
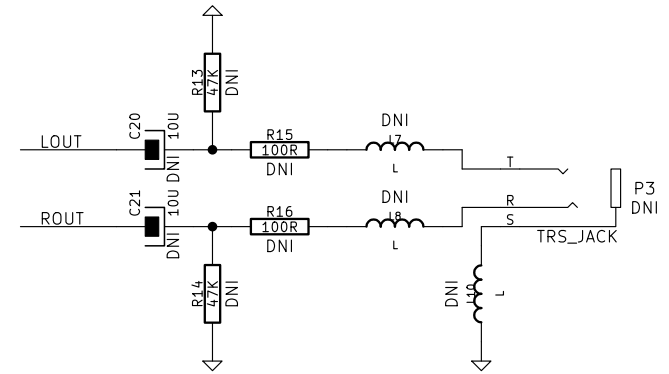
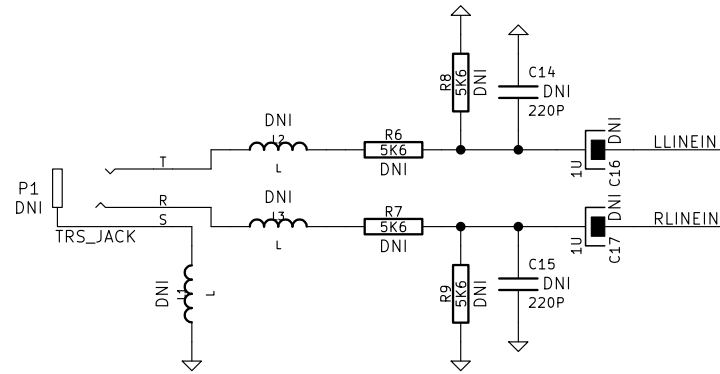
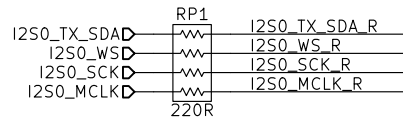


LOGO1
SHAREBRAINED

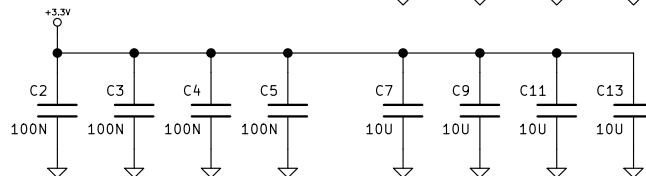
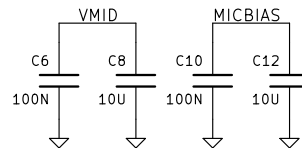
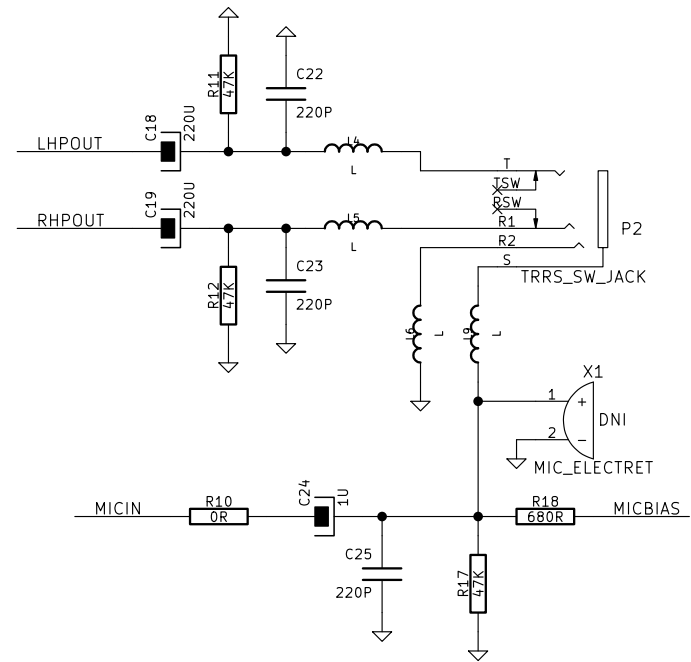
LOGO2
PORTAPACK_H1

License: GNU General Public License, version 2	
Copyright © 2014 Jared Boone	
ShareBrained Technology, Inc.	
Sheet: /	
File: portapack_h1.sch	
Title: PortaPack H1	
Size: A4	Date: 13 Oct 2014
KiCad E.D.A. kicad (2015-07-14 BZR 5938)-product	Rev: 20140826
	Id: 1/4



WM8731 DAI is hi-Z.
100K PD when disabled

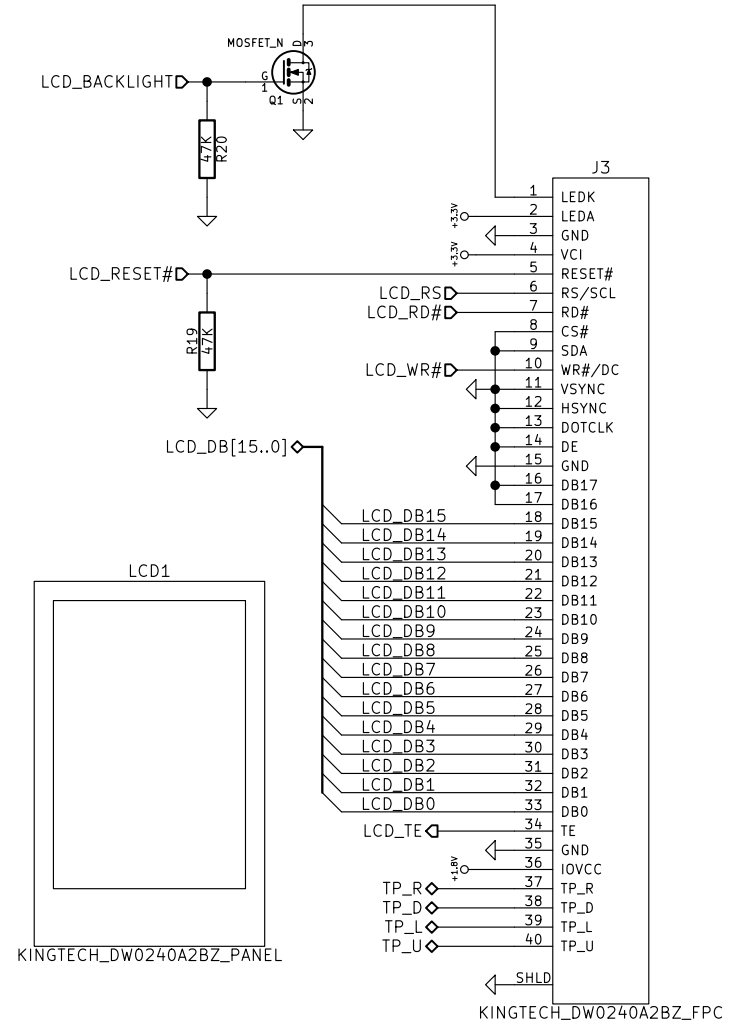
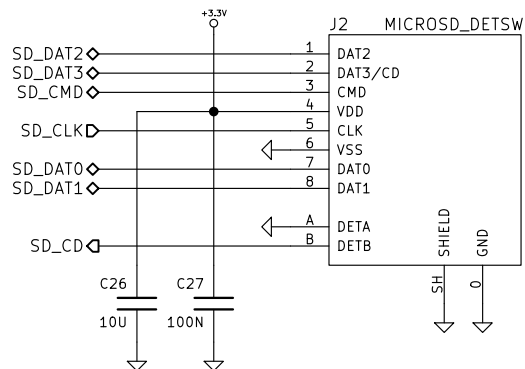
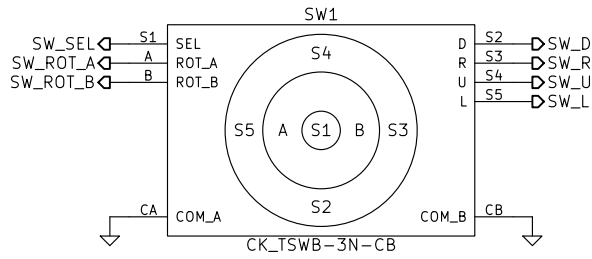
I2C Addresses on HackRF I2C bus (I2C0?):
0b1100000: Si5351C-B
0b0011010: WM8731 audio codec (CSB=0)



License: GNU General Public License, version 2
Copyright © 2014 Jared Boone
ShareBrained Technology, Inc.
Sheet: /audio/
File: audio.sch

Title: PortaPack H1

Size: A4	Date: 13 Oct 2014	Rev: 20140826
KiCad E.D.A. kicad (2015-07-14 BZR 5938)-product		Id: 2/4



LCD Mode:
8080 MCU 16-bit bus interface I
IM[3:0] = 0b0001, DB[15:0] active

License: GNU General Public License, version 2

Copyright © 2014 Jared Boone

ShareBrained Technology, Inc.

Sheet: /lcd_sw_sd/

File: lcd_sw_sd.sch

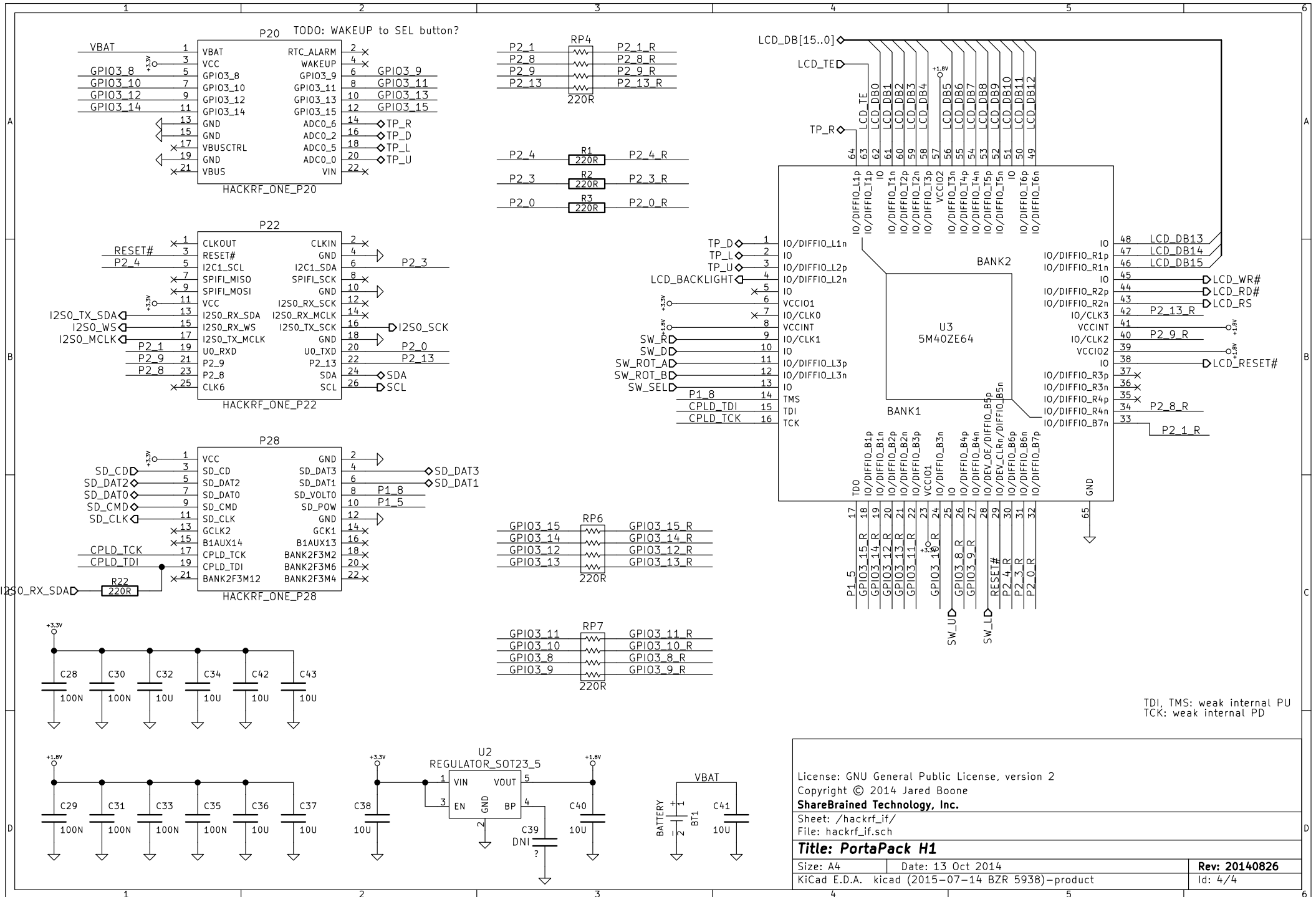
Title: PortaPack H1

Size: A4 | Date: 13 Oct 2014

KiCad E.D.A. kicad (2015-07-14 BZR 5938)-product

Rev: 20140826

Id: 3/4



TDI, TMS: weak internal PU
TCK: weak internal PD

License: GNU General Public License, version 2
Copyright © 2014 Jared Boone
ShareBrained Technology, Inc.
Sheet: /hackrf_if/
File: hackrf_if.sch

Title: PortaPack H1

Size: A4	Date: 13 Oct 2014	Rev: 20140826
KiCad E.D.A. kicad (2015-07-14 BZR 5938)-product		Id: 4/4